

SAFETY NOTICE

The TopspinPro is not a toy and is not suitable for children under 5
Children under 16 should be supervised by an adult

WHAT'S IN THE BOX

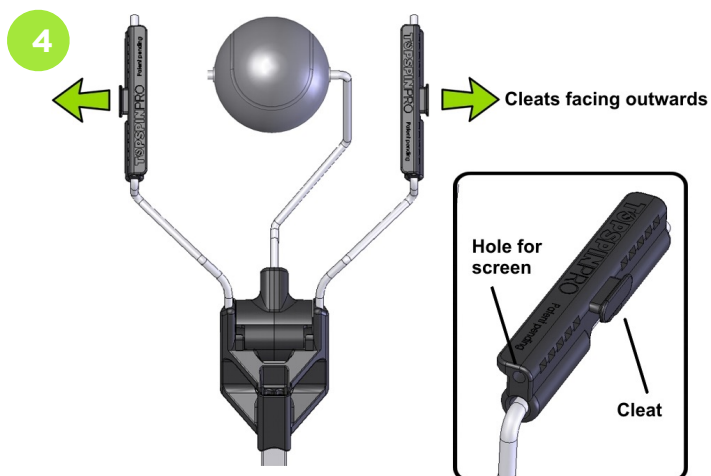
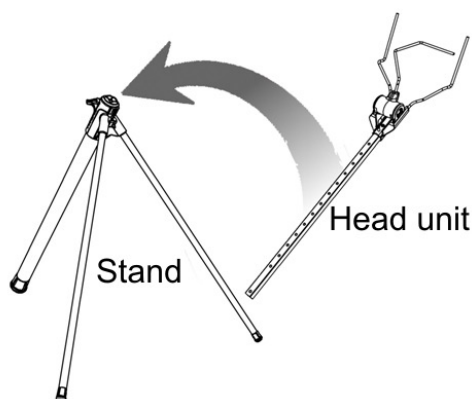
- | | | |
|----------------------|----------------------|-------------------------|
| 1. stand (tripod) | 4. ball | 5. 2 x fabric screens |
| 2. head unit | A. 2 x rubber tubes | 6. 2 x screen-retainers |
| 3. elastic (+ spare) | B. 2 x nylon washers | 7. bag |



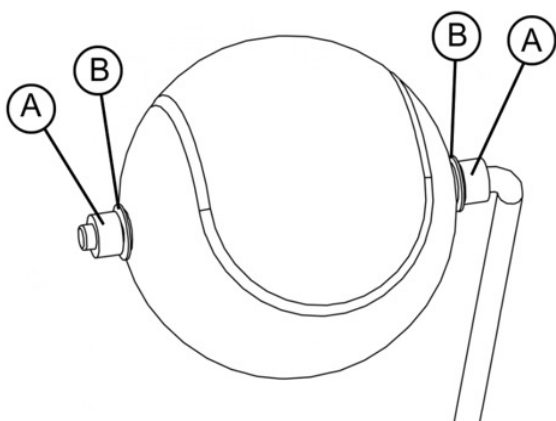
HOW TO ASSEMBLE THE PRODUCT

(also see website for for assembly video topspinpro.com/instructions)

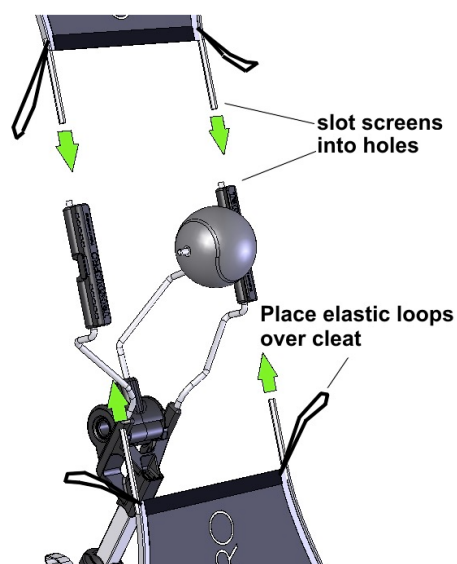
- 1** Insert the thin front legs of the stand into the leg holders as guided by the internal elastic. The legs should slide in about 2 cm.



- 2** Slide the square aluminium shaft of the head unit into the top of the stand. Ensure the side with the holes is facing up.



- 5** Slide the screen-retainers onto the steel rods of the head unit. Make sure the cleats face outwards.



- 3** Slide a rubber tube onto the steel rod, followed by a nylon washer, then the ball, the second washer and the second tube.

- 6** Insert the rods of the screen panels into the small holes (do not be concerned if the retainers twist round slightly).

- 7** Once the rods are in, loop the elastics around the cleats to keep the screens taut.